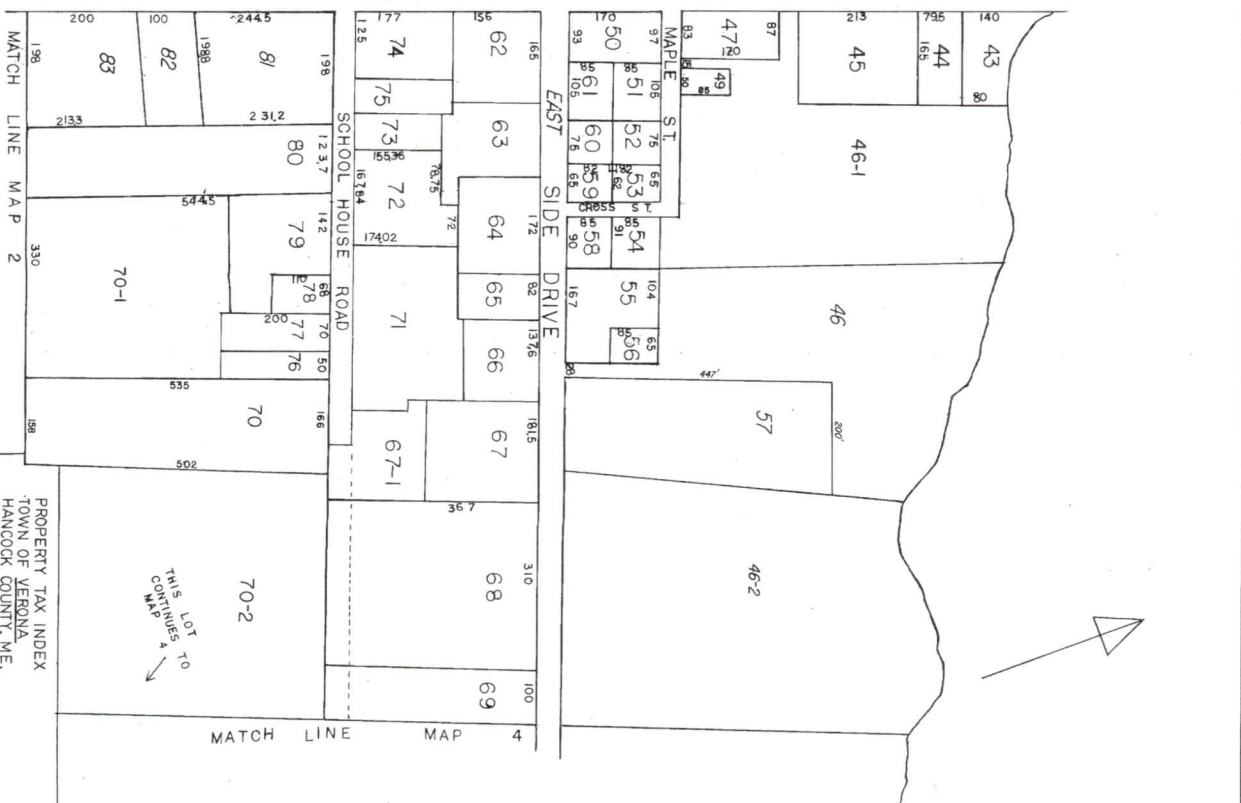
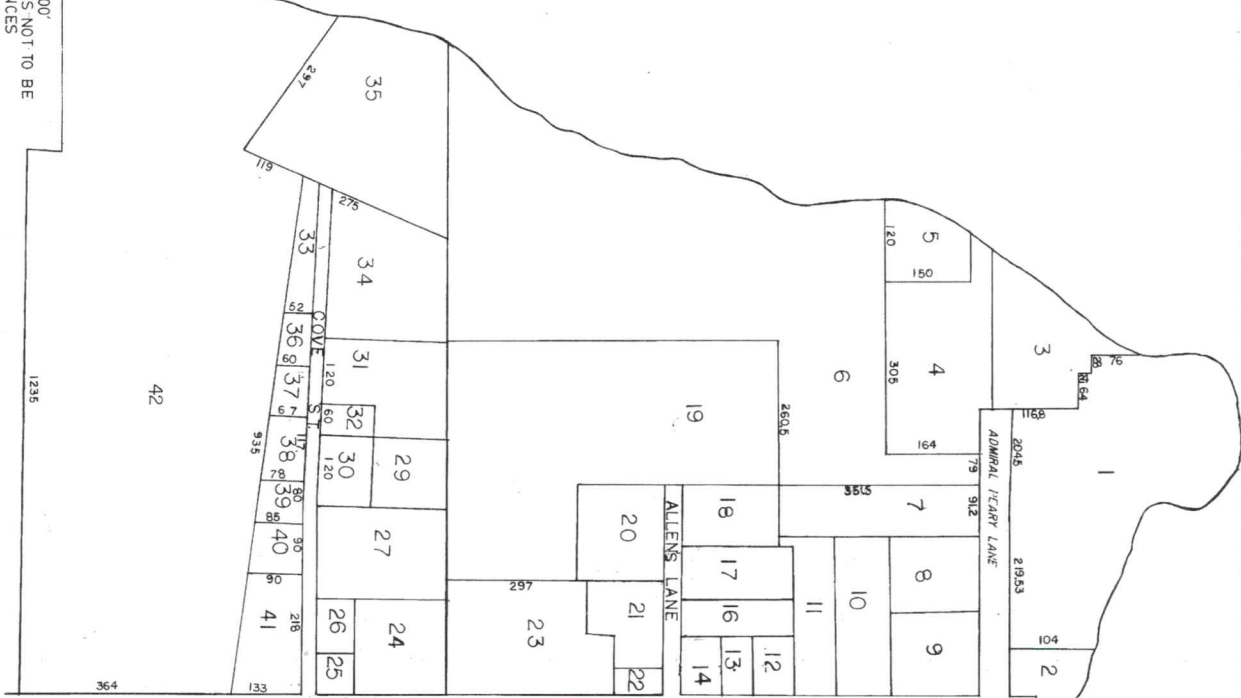


SCALE 1" = 100'  
FOR ASSESSMENT PURPOSES NOT TO BE  
USED FOR CONVEYANCES



THIS LOT TO  
CONTINUE A  
MAP

PROPERTY TAX INDEX  
TOWN OF VERONA  
HANCOCK COUNTY, ME.  
BY: W.B. HAMLIN  
DATE: 4-1-85